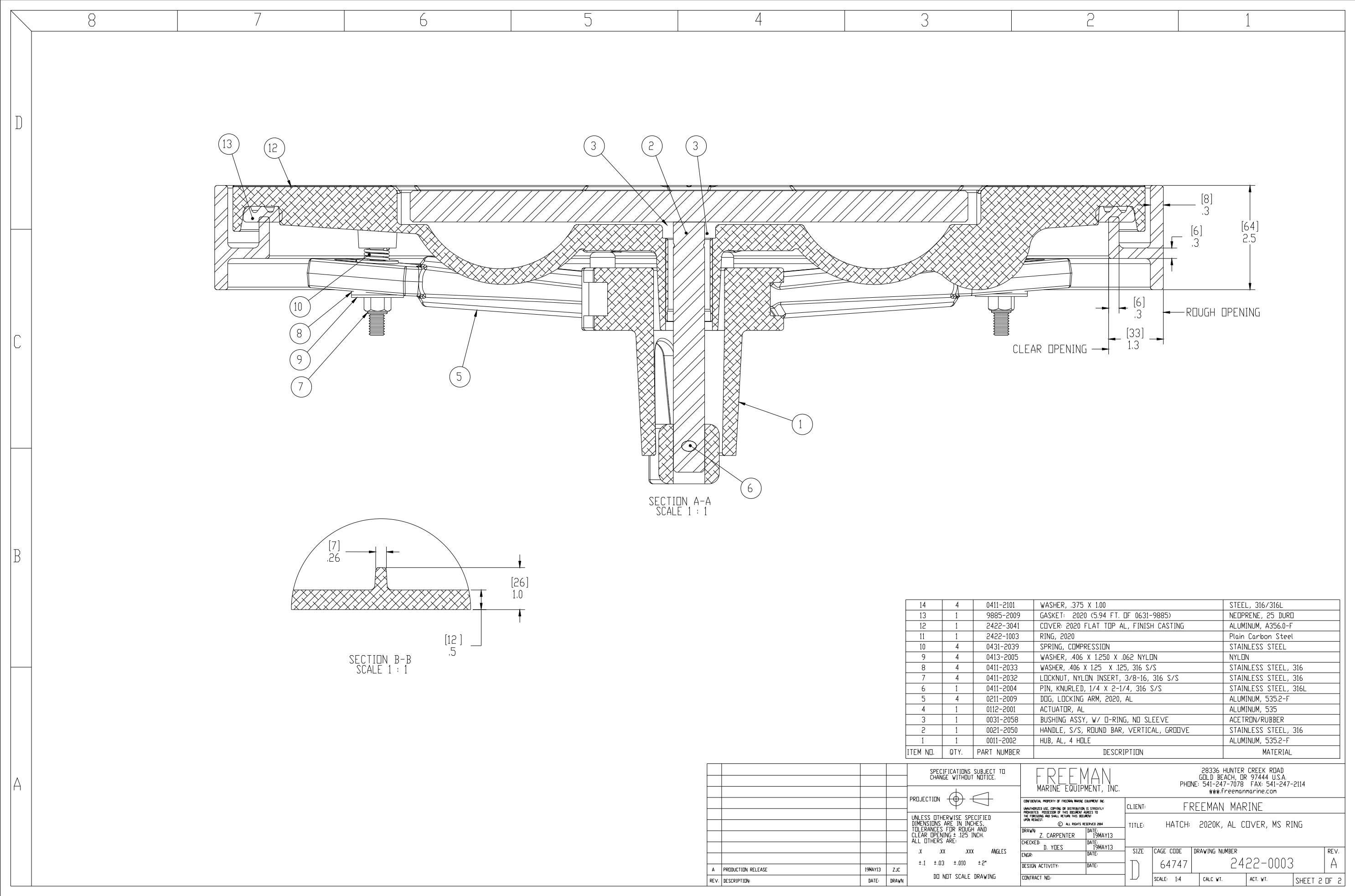


12. FOR SPECIFIC INFORMATION CONTACT SALES.
 11. FINISH, ALUMINUM COVER - TOPCOAT BRISTOL SHAPE - AWLGrip / MATTERHORN WHITE.
 10. FINISH, STEEL RING - BARE METAL - NO PREP/NO PRIMER/NO PAINT - AS MANUFACTURED.
 9. COMPLETE ASSEMBLY WEIGHT W/ DECK RING, 61LBS/ 27.6K.
 8. DOGGING PRESSURE FULLY ADJUSTABLE.
 7. HANDLE POSITION TOPSIDE INDICATES WHETHER DOGGING MECHANISM IS IN OPEN OR CLOSED POSITION.
 6. ALUMINUM ALLOY MECHANISM SHOWN.
 5. FLUSH, WATERTIGHT CONSTRUCTION.
 4. INTEGRAL TOPSIDE "T" HANDLE STANDARD, OTHER TOPSIDE ACTUATION AVAILABLE.
 3. CAST ALUMINUM ALLOY FLANGE, FLANGE CAN BE DRILLED FOR BOLTED INSTALLATIONS OR WELDED TO ALUMINUM.
 2. QUICK-ACTING, MECHANISM ENGAGES OR DISENGAGES IN QUARTER-TURN OF CENTER SPINDLE.
 1. 20.1 X 20.1 CLEAR OPENING, ALL DIMENSIONS SHOWN SUBJECT TO CASTING VARIATION AND ARE REFERENCE ONLY.
- NOTES: UNLESS OTHERWISE SPECIFIED.

SPECIFICATIONS SUBJECT TO CHANGE WITHOUT NOTICE.		FREEMAN MARINE EQUIPMENT, INC.		28336 HUNTER CREEK ROAD GOLD BEACH, OR 97444 U.S.A. PHONE: 541-247-7078 FAX: 541-247-2114 www.freemarine.com	
PROJECTION		UNLESS OTHERWISE SPECIFIED DIMENSIONS ARE IN INCHES. TOLERANCES FOR ROUGH AND CLEAR OPENING ± .125 INCH. ALL OTHERS ARE:		CLIENT: FREEMAN MARINE	
.X .XX .XXX ANGLES ±.1 ±.03 ±.010 ±2°		DO NOT SCALE DRAWING		TITLE: HATCH: 2020K, AL COVER, MS RING	
A PRODUCTION RELEASE		19MAY13 ZJC		SIZE: D	
REV. DESCRIPTION		DATE DRAWN		CAGE CODE: 64747	
				DRAWING NUMBER: 2422-0003	
				SCALE: 1:2.5	
				ACT. WT.	
				SHEET 1 OF 2	



ITEM NO.	QTY.	PART NUMBER	DESCRIPTION	MATERIAL
14	4	0411-2101	WASHER, .375 X 1.00	STEEL, 316/316L
13	1	9885-2009	GASKET: 2020 (5.94 FT. DF 0631-9885)	NEOPRENE, 25 DURO
12	1	2422-3041	COVER: 2020 FLAT TOP AL, FINISH CASTING	ALUMINUM, A356.0-F
11	1	2422-1003	RING, 2020	Plain Carbon Steel
10	4	0431-2039	SPRING, COMPRESSION	STAINLESS STEEL
9	4	0413-2005	WASHER, .406 X 1.250 X .062 NYLON	NYLON
8	4	0411-2033	WASHER, .406 X 1.25 X .125, 316 S/S	STAINLESS STEEL, 316
7	4	0411-2032	LOCKNUT, NYLON INSERT, 3/8-16, 316 S/S	STAINLESS STEEL, 316
6	1	0411-2004	PIN, KNURLED, 1/4 X 2-1/4, 316 S/S	STAINLESS STEEL, 316L
5	4	0211-2009	DOG, LOCKING ARM, 2020, AL	ALUMINUM, 5352-F
4	1	0112-2001	ACTUATOR, AL	ALUMINUM, 535
3	1	0031-2058	BUSHING ASSY, W/ O-RING, NO SLEEVE	ACETRON/RUBBER
2	1	0021-2050	HANDLE, S/S, ROUND BAR, VERTICAL, GROOVE	STAINLESS STEEL, 316
1	1	0011-2002	HUB, AL, 4 HOLE	ALUMINUM, 5352-F

SPECIFICATIONS SUBJECT TO CHANGE WITHOUT NOTICE.		FREEMAN MARINE EQUIPMENT, INC. 28336 HUNTER CREEK ROAD GOLD BEACH, OR 97444 U.S.A. PHONE: 541-247-7078 FAX: 541-247-2114 www.freemarmarine.com	
PROJECTION		CLIENT: FREEMAN MARINE	
UNLESS OTHERWISE SPECIFIED DIMENSIONS ARE IN INCHES. TOLERANCES FOR ROUGH AND CLEAR OPENING ± .125 INCH. ALL OTHERS ARE:		TITLE: HATCH: 2020K, AL COVER, MS RING	
X XX XXX ANGLES ±.1 ±.03 ±.010 ±2°		CONTRACT NO:	
DO NOT SCALE DRAWING		DRAWN: Z. CARPENTER DATE: 19MAY13 CHECKED: D. YONES DATE: 19MAY13 ENGR: DATE: DESIGN ACTIVITY: DATE:	
A PRODUCTION RELEASE 19MAY13 ZJC REV. DESCRIPTION DATE DRAWN		SIZE: D CAGE CODE: 64747 DRAWING NUMBER: 2422-0003 REV. A SCALE: 1:4 CALC. WT. ACT. WT. SHEET 2 OF 2	