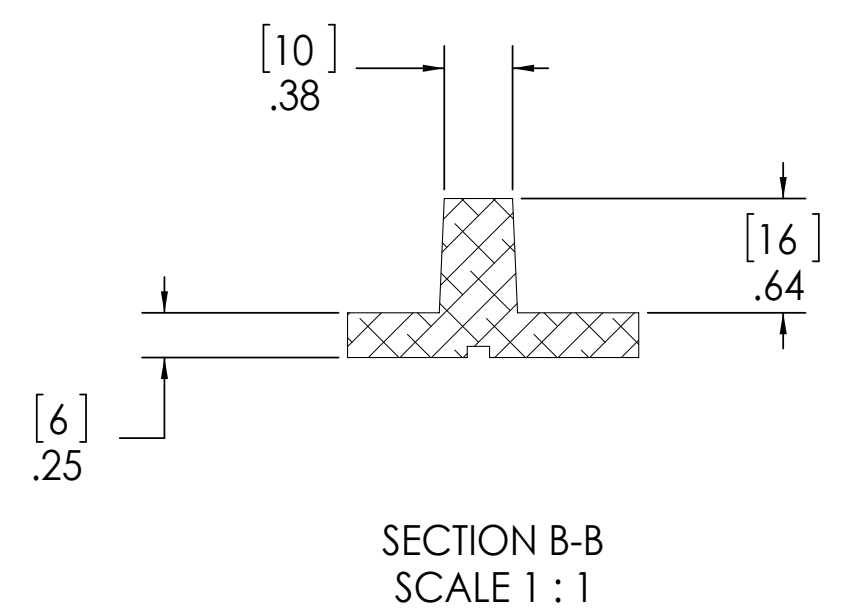


10. FOR SPECIFIC INFORMATION CONTACT SALES.
9. COMPLETE ASSEMBLY WEIGHT W/ DECK RING, 29.8LBS/ 13.5K.
8. DOGGING PRESSURE FULLY ADJUSTABLE.
7. HANDLE POSITION TOPSIDE INDICATES WHETHER DOGGING MECHANISM IS IN OPEN OR CLOSED POSITION.
6. ALUMINUM ALLOY MECHANISM SHOWN.
5. FLUSH, WATERTIGHT CONSTRUCTION.
4. INTEGRAL TOPSIDE "T" HANDLE STANDARD, OTHER TOPSIDE ACTUATION AVAILABLE.
3. CAST ALUMINUM ALLOY FLANGE, FLANGE CAN BE DRILLED FOR BOLTED INSTALLATIONS OR WELDED TO ALUMINUM.
2. QUICK-ACTING, MECHANISM ENGAGES OR DISENGAGES IN QUARTER-TURN OF CENTER SPINDLE.
1. 12.0" x 18.0" CLEAR OPENING, ALL DIMENSIONS SHOWN SUBJECT TO CASTING VARIATION AND ARE REFERENCE ONLY.

NOTES: UNLESS OTHERWISE SPECIFIED.



A

B

C

D

SPECIFICATIONS SUBJECT TO CHANGE WITHOUT NOTICE.			FREEMAN MARINE EQUIPMENT, INC.		28336 HUNTER CREEK ROAD GOLD BEACH, OR 97444 U.S.A. PHONE: 541-247-7078 FAX: 541-247-2114 www.freemanmarine.com	
PROJECTION			CONFIDENTIAL PROPERTY OF FREEMAN MARINE EQUIPMENT INC. REPRODUCTION OR DISTRIBUTION IS STRICTLY PROHIBITED. POSSESSOR OF THIS DOCUMENT AGREES TO THE TERMS AND SHALL RETURN THIS DOCUMENT UPON REQUEST. © ALL RIGHTS RESERVED 2009		CLIENT: FREEMAN MARINE	
UNLESS OTHERWISE SPECIFIED DIMENSIONS ARE IN INCHES. TOLERANCES FOR ROUGH AND CLEAR OPENING: .125 INCH. ALL OTHERS ARE:			DRAWN: P. CANCELLIERI DATE: 22MAR10		TITLE: HATCH: 1218-HK, AL COVER	
.X .XX .XXX ANGLES			CHECKED: DATE:		SIZE CAGE CODE DRAWING NUMBER	
±.1 ±.03 ±.010 ±2°			ENGR: DATE:		D 64747 2471-0002 A	
DO NOT SCALE DRAWING			DESIGN ACTIVITY: DATE:		SCALE: 1:2.5 CALC. WT. ACT. WT. SHEET 1 OF 3	
REV.	DESCRIPTION:	DATE:	DRAWN	CONTRACT NO.:		
-	INITIAL RELEASE	22MAR10	PPC			
A	UPDATE GEN. NOTES & B.O.M.	03NOV11	PPC			